



Oklahoma AgWeather Release 1.0.0
User Manual

Overview

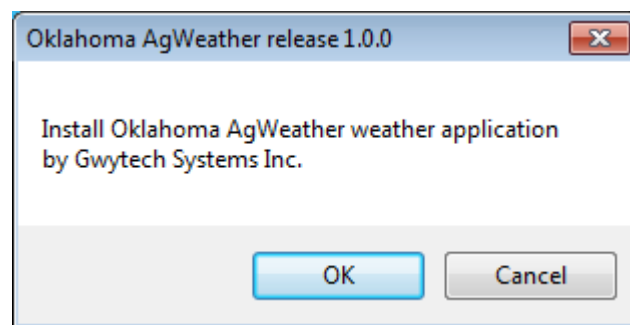
This Oklahoma AgWeather application works in conjunction with the ET1 from Gwytech Systems Inc. Its purpose is to retrieve daily evapotranspiration and rainfall data from the Oklahoma AgWeather Network. The data is supplied by the Oklahoma AgWeather.

Installation

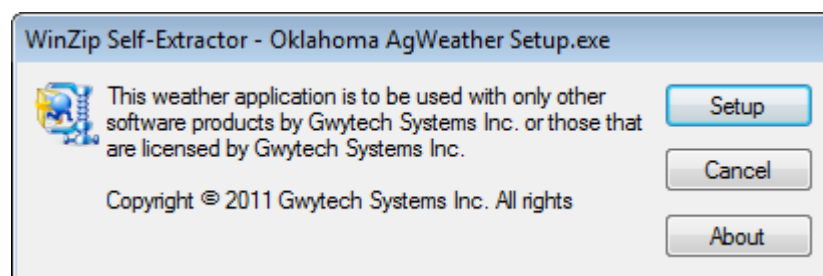
It is assumed that the ET1 evapotranspiration software is already installed on your computer and your computer has high speed Internet. Below are shown the steps necessary to install this weather application once it has been downloaded from our website at www.gwytech.com



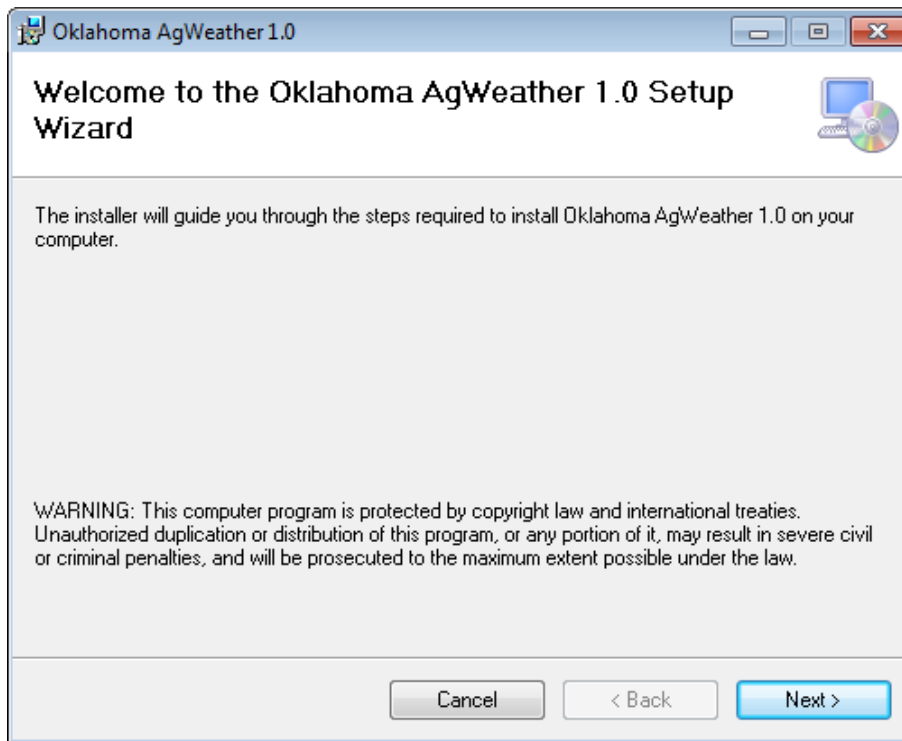
Find the location that this weather application was downloaded to then double click on it to start the installation process. Follow the onscreen instructions. You may need to give this application elevated permissions in order to install it on your computer.



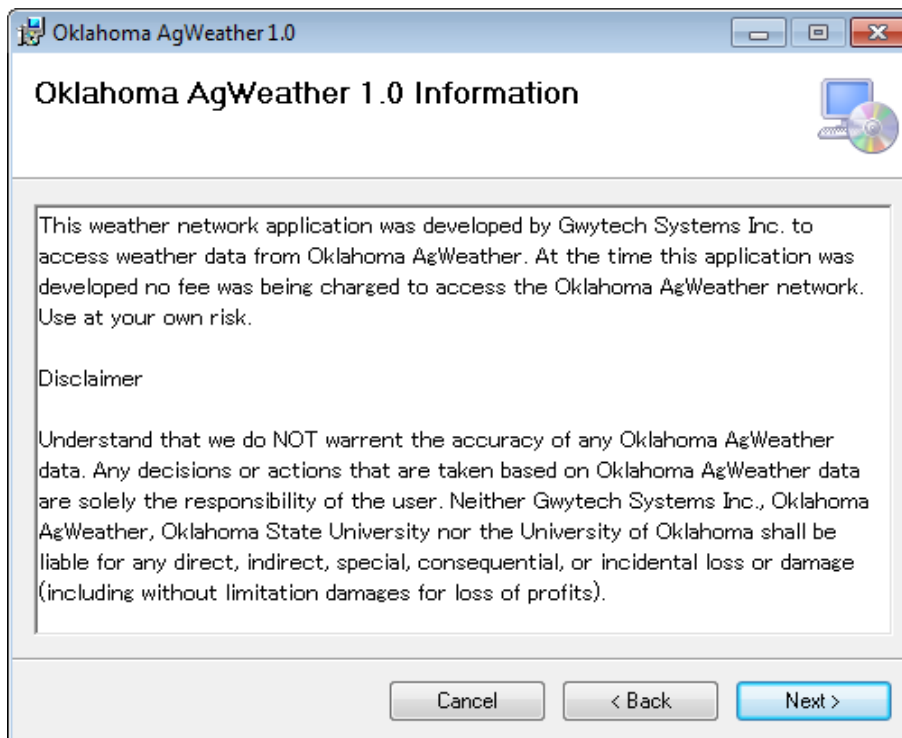
First screen tells you what weather application is going to be installed. Select OK to continue.



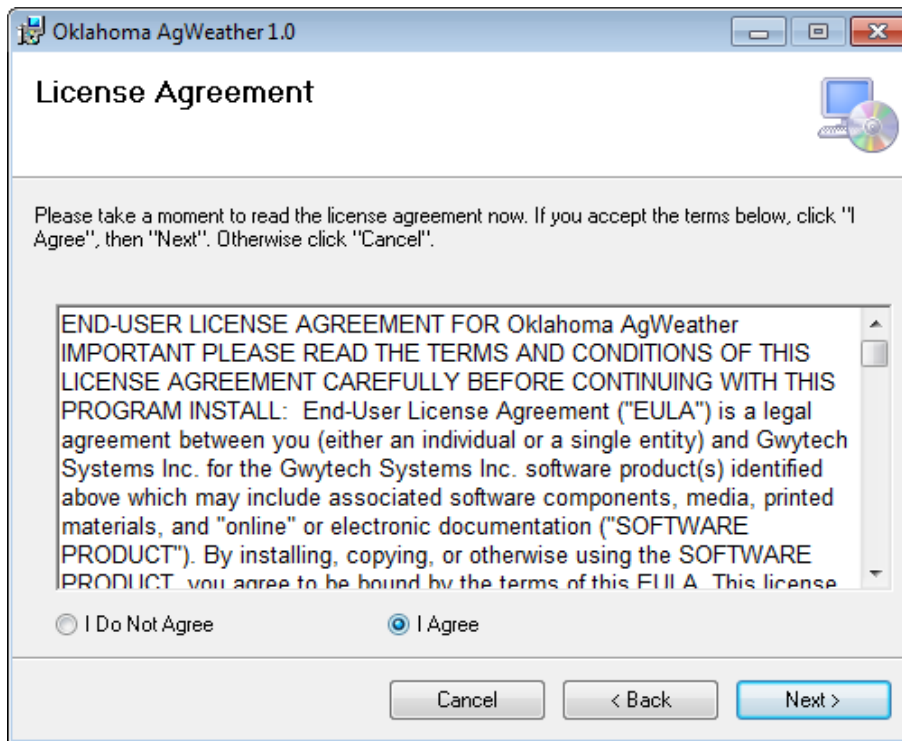
Next is some information about the weather application. Select Setup to proceed with the installation.



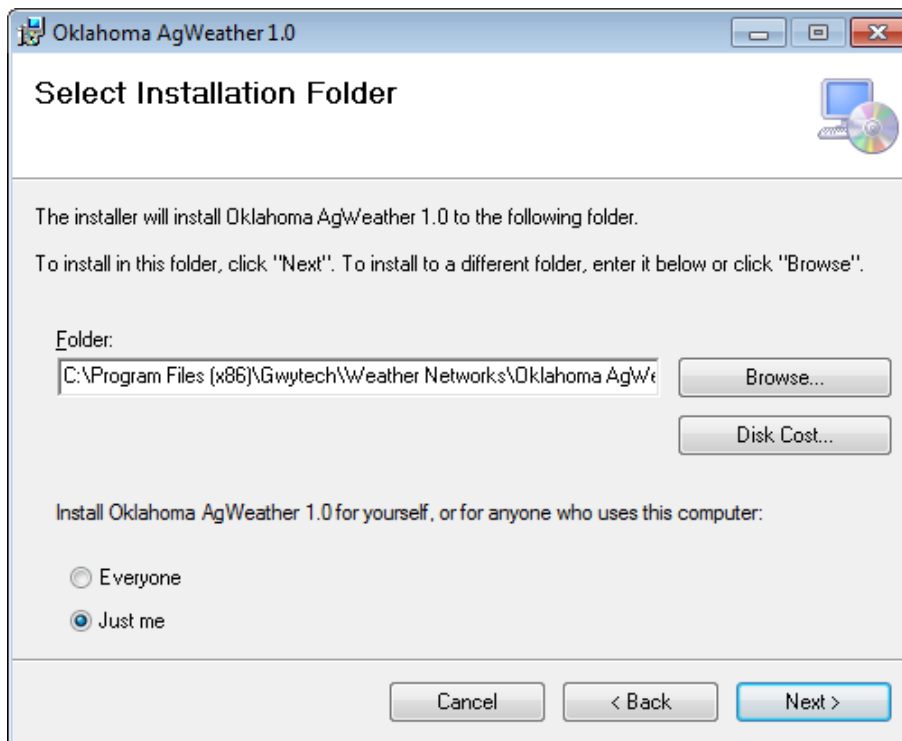
This is the Setup Wizard. This will install any missing components required for it to function. If you have already installed ET1 then there will be no additional components to install.



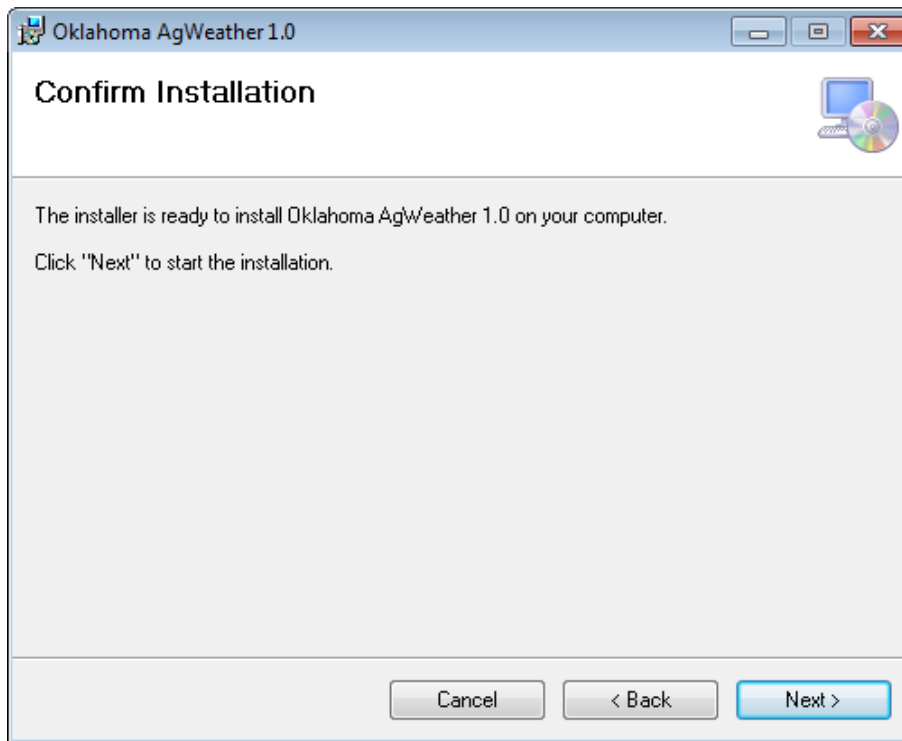
Next screen is some basic information about this weather application. Select Next to continue.



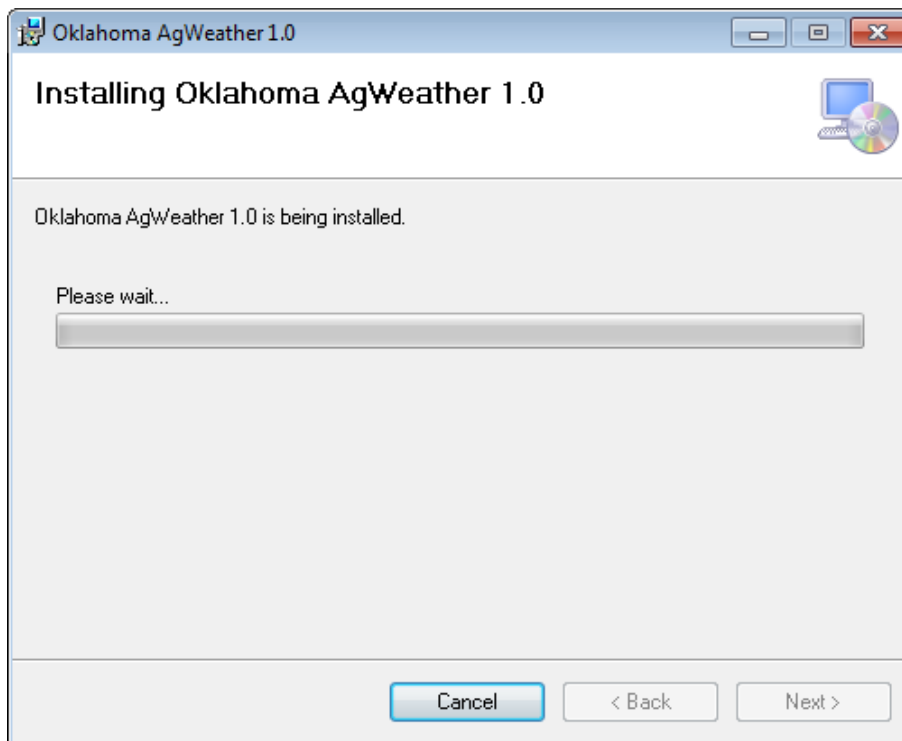
Now the license agreement. Select Next to continue.



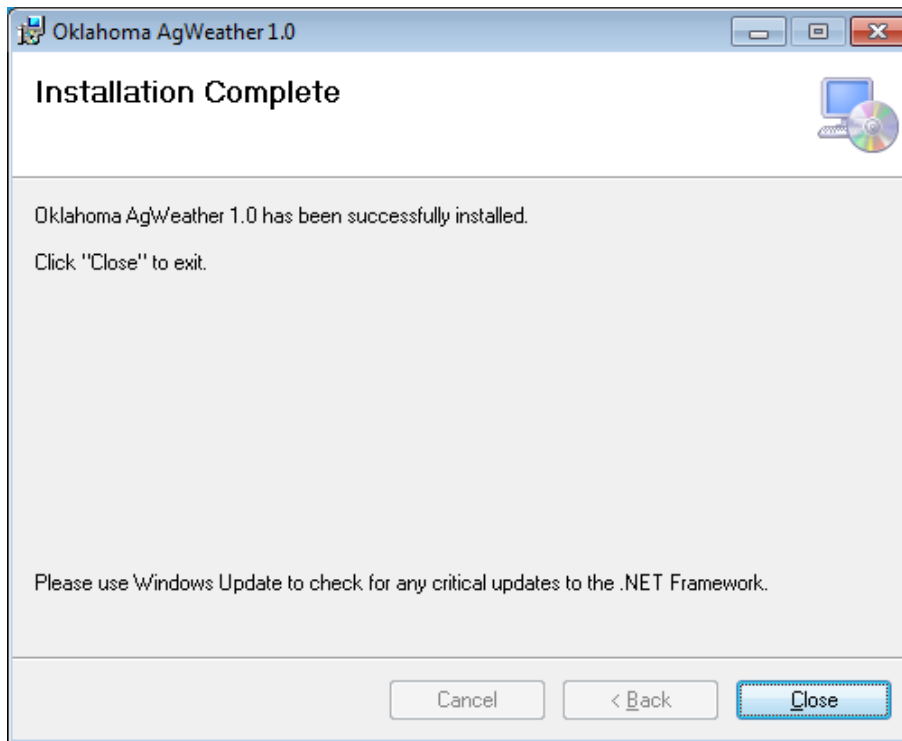
Here you can change the installation directory and disk drive. You should leave the defaults. Its best to allow only one person access to this application. Select Next to continue.



This step is just to confirm that you do want to install this weather application. Select Next to continue.



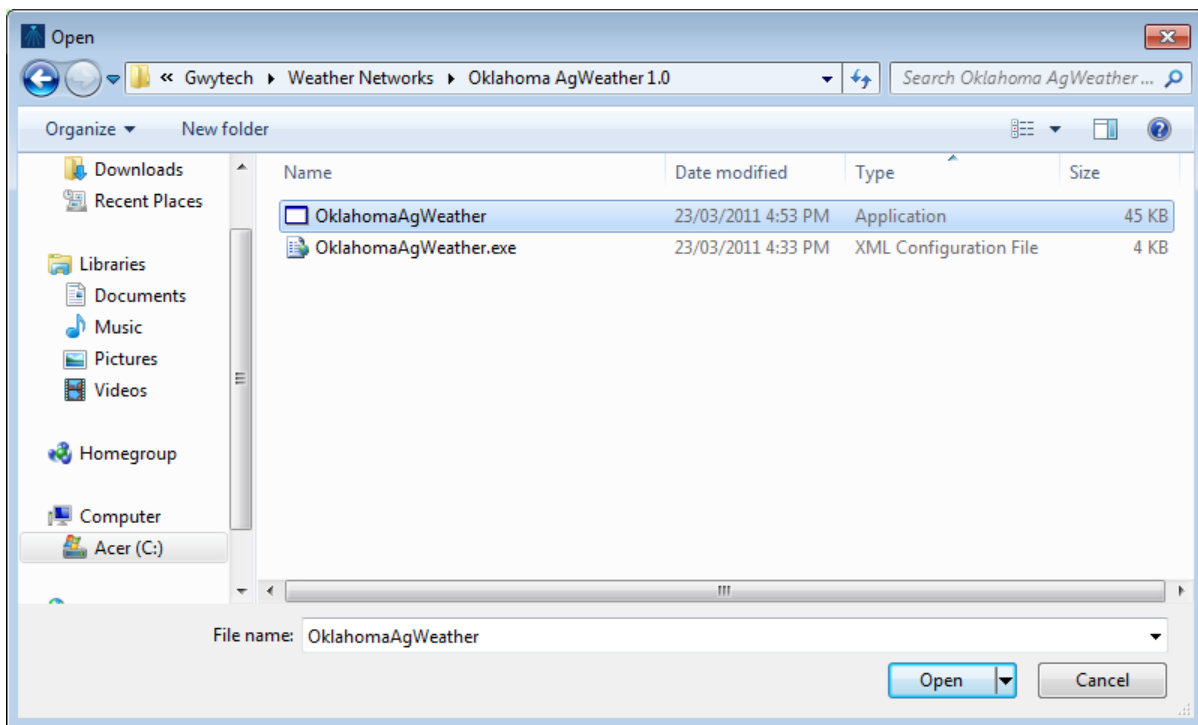
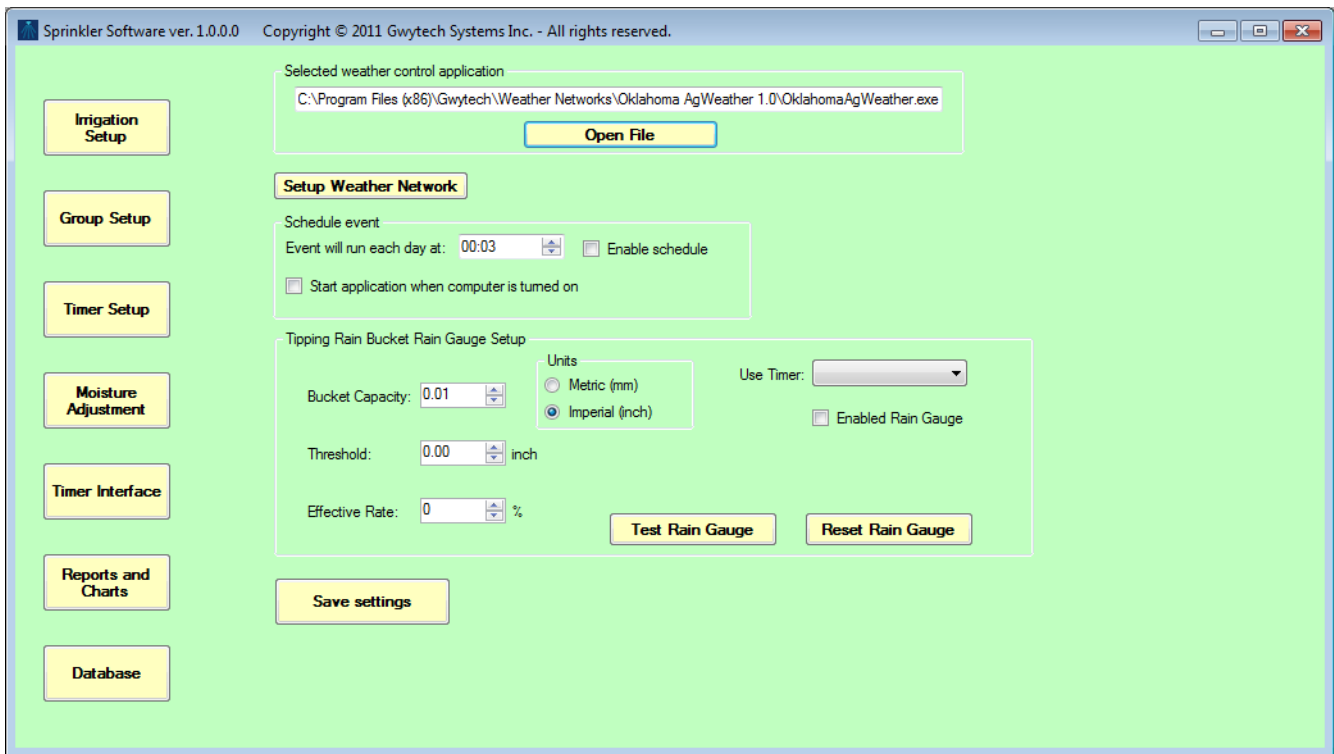
This screen show you the process of the installation. It should not take long unless your firewall is prevent it from installing.



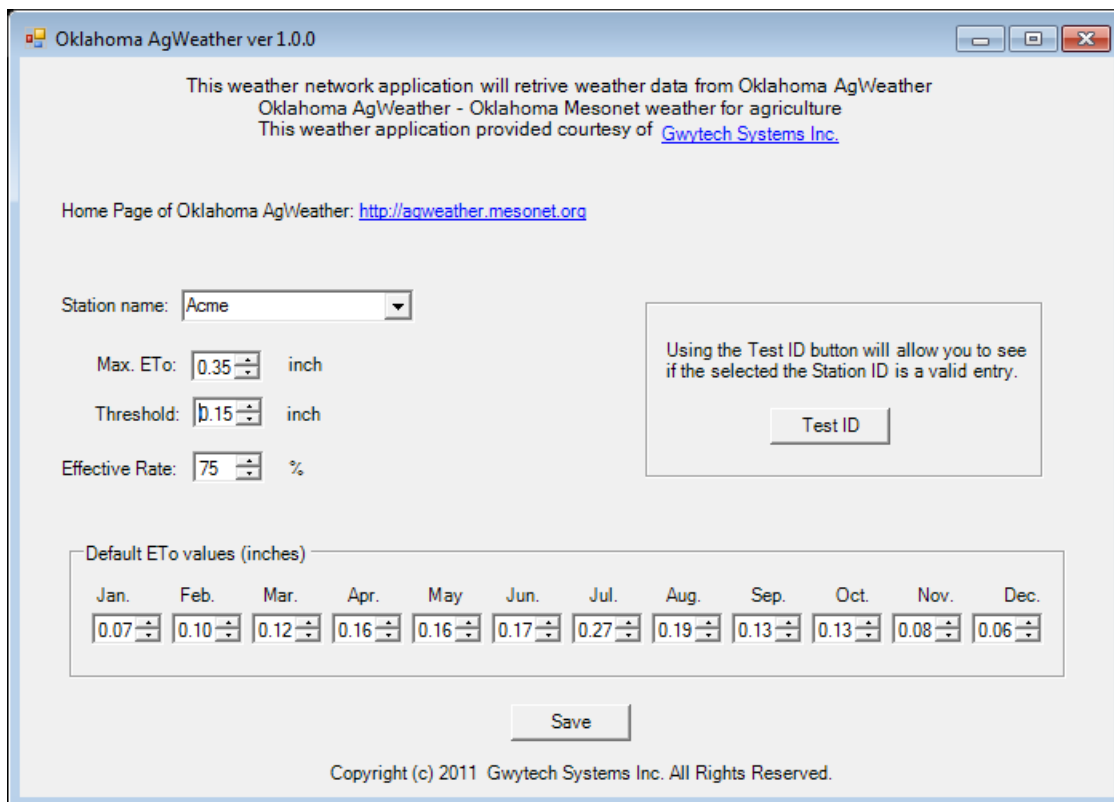
Once the installation has finished this is the screen that you will see. The weather application will **not** have an icon on the desktop or be accessible from the start menu. These applications are executed (run) by the ET1 application as a console application. Its purpose is to retrieve weather data for the ET1 application via the Internet. So, you need to have a Internet connection that is always on.

Configure and Using Weather Application

In order to configure this weather application it must be loaded from within the ET1 application . The ET1 application should have already been installed. Open the ET1 application. If on the task bar right click on the icon and select Open Sprinkler. If it isn't running then double click it from the desktop. Click the Irrigation Setup button and then the Open File button (see screen below). This brings up a window to allow you to select your weather application. You will need to go to the directory that has the weather application that you just installed. If you left the default settings it will be at Gwytech\Weather Networks\ from here select the name of the weather application you installed.



Select the name of your weather application. **Note:** select the Type application not the XML configuration File. Then select Open. Now save setting in the ET1 application. To configure this weather application click on the Setup Weather Network button. You should see a screen similar to below.



Select the Station name, it should be one that is close to your location. Now select the Max. ETo to set the maximum amount of water loss that can be used. This allows for mistakes in the data to have a limited amount of impact. This setting is the largest value for water loss that could occur. Now setting up the threshold and effective rate for rainfall from the weather network. Not all rainfall is effective, to little won't add any moisture to the root zone so there is a threshold that must be reached before the rainfall is considered effective. This value is typically set to 0.15 inches. Now any amount of rainfall above the threshold will be consider. But not all of it is effective. Some may run off and the amount can vary over the area of rain. So an effective rate of 75% can typically be used. It is this effective rate over the threshold that will be used in the ET1 application. If you are using an on site tipping bucket rain gauge then these setting for threshold and effective rate are ignored and the setting for the tipping bucket rain gauge are used in its place. Note: if you set the threshold to 0.00 and the effective rate to 100% rainfall and effective rainfall will be the same.

The Default ETo values are used in place of data from the weather network if there is an error in the data or a problem with the network. These values are dependent of your location and are from historical records. The Test ID button will allow you to see if access to the selected station is possible. It will return the current data for Eto and rainfall. Once you are satisfied with the setup click on the Save button to save this setup so it can be used by the ET1 application. Close the weather application by clicking on the X in the top right corner.

There are links to the home page and stations locations for most of the weather networks. These will help you in location a site close to your location. Also our website www.gwytech.com has location information on our weather applications.